

275 St George's Road

SUBMITTED BY
Andy McCorrie

CREATED ON
2023-08-18

LOCATION
275 St George's Road
Coventry

DETAILS
Total area: 109.00 m²
Living area: 109.00 m²
Floors: 3
Rooms: 20

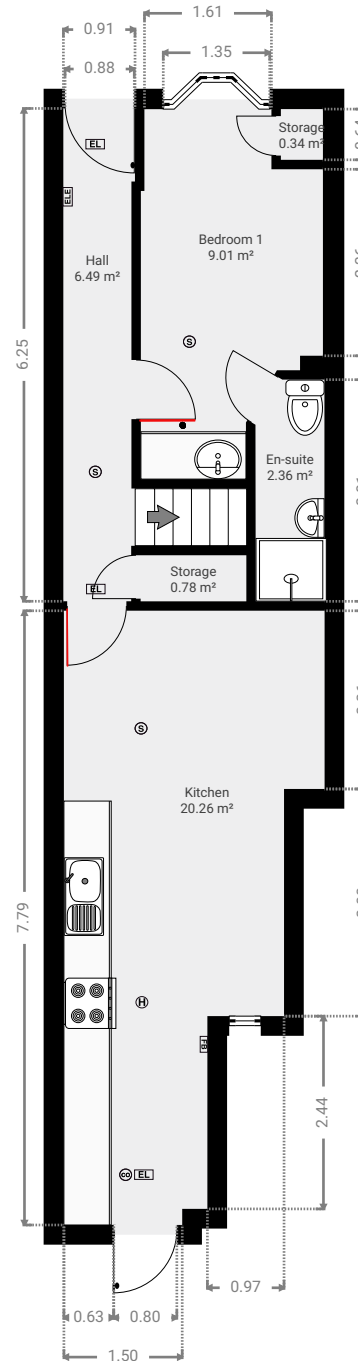
HMO Tester
Andy@HMOTester.co.uk

LiDAR technology has been used to produce this Floorplan and has accuracy levels of 95% which is more accurate than a manually drawn or input Floorplan.

0 1 2 3m
1:96

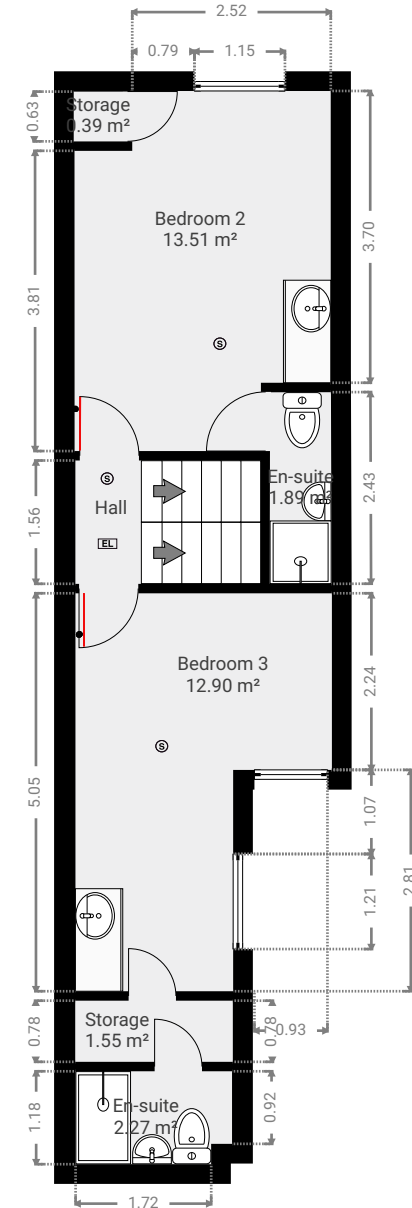
▼ Ground Floor

TOTAL AREA: 39.21 m² • LIVING AREA: 39.21 m² • ROOMS: 6



▼ 1st Floor

TOTAL AREA: 36.14 m² • LIVING AREA: 36.14 m² • ROOMS: 7



275 St George's Road

SUBMITTED BY
Andy McCorrie

CREATED ON
2023-08-18

LOCATION
275 St George's Road
Coventry

DETAILS
Total area: 109.00 m²
Living area: 109.00 m²
Floors: 3
Rooms: 20

HMO Tester
Andy@HMOTester.co.uk

LiDAR technology has been used to produce this Floorplan and has accuracy levels of 95% which is more accurate than a manually drawn or input Floorplan.

